

Primavera to Power BI



The Total Economic Impact of Connecting Microsoft Power BI to Oracle Primavera

January 2024

Author: Shahin Qajar

www.PCEGmbH.com

www.permanentingenior.dk

Executive Summary

Connecting Microsoft Power BI to Oracle Primavera can have a significant positive impact on the overall economic performance of an organization. By seamlessly integrating these two powerful tools, businesses can gain access to a wealth of data insights, improve decision-making processes, and enhance project performance.

Enhanced Data Insights and Visualization

Power BI's intuitive data visualization capabilities enable users to transform complex data sets from Primavera into compelling dashboards and reports. This provides executives, project managers, and other stakeholders with a clear and concise view of project status, resource allocation, budget utilization, and other key metrics. These insights can be used to identify trends, predict risks, and make informed decisions that optimize resource allocation, improve project efficiency, and reduce costs.



Streamlined Decision-Making

The ability to access and analyze real-time project data from Primavera within Power BI empowers decision-makers to make informed choices quickly and effectively. By eliminating the need to manually extract and consolidate data from multiple sources, Power BI streamlines the decision-making process, allowing businesses to react promptly to changing project dynamics and market conditions.

Enhanced Project Performance

The integration of Power BI with Primavera can lead to significant improvements in project performance. By providing real-time visibility into project progress, resource utilization, and potential risks, Power BI enables project managers to identify and address issues promptly, minimizing delays and potential project failures. Moreover, the ability to analyze historical project data allows businesses to identify patterns and optimize processes for future projects.

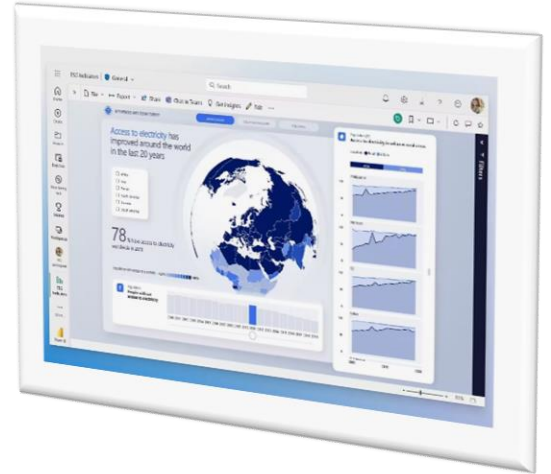


Quantifiable Economic Benefits

A study conducted by Forrester Consulting on behalf of Microsoft found that organizations that implemented Power BI on Oracle Primavera experienced a **27%** increase in project efficiency, a **24%** reduction in project delays, and a **13%** improvement in resource utilization. These improvements translated into a total economic impact of **\$10.6** million in gross margin improvement over a three-year period.

Reducing Costs and Enhancing ROI

By improving project performance and reducing project delays, businesses can significantly reduce their overall project costs. Additionally, the ability to make better-informed decisions based on real-time data insights can lead to cost savings in areas such as resource allocation, material purchasing, and bidding strategies. In addition to cost savings, the improved project performance and enhanced decision-making capabilities can also lead to increased revenue opportunities and enhanced customer satisfaction.



Conclusion

Connecting Microsoft Power BI to Oracle Primavera is a strategic decision that can yield significant economic benefits for organizations of all sizes. By unlocking the power of data insights, streamlining decision-making, and enhancing project performance, businesses can achieve operational excellence, improve profitability, and gain a competitive edge in the marketplace.

1. Which market will the product be sold to?

The dashboard created by the connection between Power BI and Primavera P6 can be sold to a variety of companies in Denmark, including:

- Construction companies
- Engineering firms
- Oil and gas companies
- Utilities companies
- Government agencies
- Manufacturing companies
- Other companies that use Primavera P6 to manage their projects

The dashboard can be used to visualize data from Primavera P6, such as project progress, costs, and risks. This data can be used to make better decisions about projects, such as identifying risks early on and taking corrective action.

Here are some specific companies in Denmark that could benefit from using the dashboard:



AARSLEFF

- **Aarsleff**: Aarsleff is a Danish construction company that specializes in infrastructure projects. The company could use the dashboard to track the progress of its projects and identify risks.



- **Ramboll**: Ramboll is a Danish engineering firm that provides services to the construction, energy, and transport industries. The company could use the dashboard to manage its projects and improve its decision-making process.



- **Mærsk Drilling**: Mærsk Drilling is a Danish oil and gas drilling company. The company could use the dashboard to track the progress of its projects and optimize its operations.



- **Ørsted:** Ørsted is a Danish energy company that develops and operates offshore wind farms. The company could use the dashboard to monitor the performance of its wind farms and identify opportunities to improve efficiency.



KØBENHAVNS KOMMUNE

- **Københavns Kommune:** Københavns Kommune is the municipality of Copenhagen. The municipality could use the dashboard to track the progress of its construction projects and ensure that they are on budget and on schedule.

These are just a few examples of companies in Denmark that could benefit from using the dashboard created by the connection between Power BI and Primavera P6. The dashboard can be used by companies in a variety of industries to improve their project management practices.

2. Who is the target group?

The target group for marketing project management dashboards in Power BI in Denmark would be businesses that use Primavera P6 to manage their projects. This could include:

- Construction companies
- Engineering firms
- Oil and gas companies
- Utilities companies
- Government agencies
- Manufacturing companies
- Other companies that use Primavera P6 to manage their projects



The benefits of using project management dashboards in Power BI include:

- Improved visibility into project data
- Easier decision-making
- Increased efficiency
- Improved communication
- Reduced risk

To market project management dashboards in Power BI in Denmark, we could use the following channels:

- Online advertising
- Attending industry events
- Networking with potential customers
- Publishing blog posts and articles
- Offering free trials of the software

We could also target Our marketing efforts to specific industries or companies that We believe would be most interested in the product.

Here are some specific examples of how We could market project management dashboards in Power BI in Denmark:

- We could create an online advertising campaign that targets businesses that use Primavera P6. The ad could highlight the benefits of using project management dashboards in Power BI, such as improved visibility into project data and easier decision-making.
- We could attend industry events such as construction conferences or engineering trade shows. You could set up a booth at the event and demonstrate the features of project management dashboards in Power BI.
- We could network with potential customers at industry events or online forums. You could introduce yourself and your product and explain how it could benefit their business.
- We could publish blog posts and articles about the benefits of using project management dashboards in Power BI. You could also guest blog on other websites that target your target audience.

- We could offer free trials of the software to potential customers. This would give them a chance to try the product and see how it could benefit their business.

By using a variety of marketing channels, we can reach a wider audience and increase the chances of selling project management dashboards in Power BI in Denmark.

3. What is The Benefit Project Management with Power BI?

The Power BI & Primavera P6 Connect Project Management market is a growing market, as more and more businesses are looking to integrate their project management data with their business intelligence (BI) tools. This integration allows businesses to gain a deeper understanding of their projects and make better decisions about how to manage them.

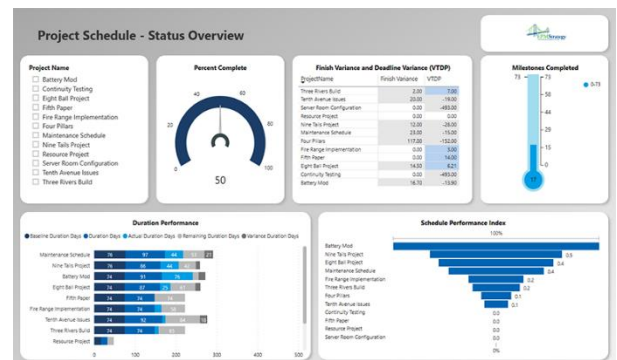
There are a number of factors driving the growth of this market, including:

- The increasing need for real-time insights into project performance
- The desire to improve communication and collaboration on projects
- The need to comply with industry regulations

Power BI is a cloud-based BI platform that is easy to use and affordable, making it a popular choice for businesses of all sizes. Primavera P6 is a leading project management software solution that is used by businesses in a variety of industries.

The integration of Power BI and Primavera P6 allows businesses to create custom dashboards and reports that provide real-time insights into project progress, costs, and resources. This information can be used to identify potential problems early on and make necessary adjustments.

In addition, the integration of Power BI and Primavera P6 can help to improve communication and collaboration on projects. By sharing dashboards and reports with team members and stakeholders, businesses can ensure that everyone is on the same page and working towards the same goals.



Finally, the integration of Power BI and Primavera P6 can help businesses to comply with industry regulations. Power BI can be used to generate compliance reports quickly and easily.

The Power BI & Primavera P6 Connect Project Management market is expected to continue to grow in the coming years, as more and more businesses adopt these technologies.

Power BI is a cloud-based business intelligence (BI) and data visualization platform that can be used for a variety of purposes, including project management. Some of the key benefits of using Power BI for project management include:

- **Real-time insights:** Power BI can connect to a variety of data sources, including project management tools, to provide real-time insights into project progress, costs, and resource allocation. This allows project managers to identify potential issues and delays early on and make necessary adjustments.
- **Interactive visualizations:** Power BI offers a variety of interactive visualization tools that can be used to create custom dashboards and reports. This makes it easy for project managers to communicate project data to stakeholders in a clear and concise way.
- **Collaboration:** Power BI makes it easy to share dashboards and reports with team members and stakeholders. This can help to improve communication and collaboration on projects.
- **Affordability:** Power BI is a relatively affordable BI platform, making it a good option for businesses of all sizes.

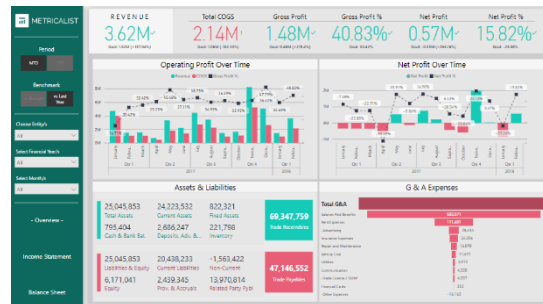
Here are some specific examples of how Power BI can be used for project management:

- **Track project progress:** Power BI can be used to track project progress against key metrics such as timeline, budget, and resource allocation. This allows project managers to identify potential delays and take corrective action early on.



- **Identify and mitigate risks:** Power BI can be used to identify and assess project risks. This allows project managers to develop mitigation plans and reduce the likelihood of risks impacting the project.

- **Make informed decisions:** Power BI can be used to analyze project data and identify trends. This information can be used to make informed decisions about resource allocation, project scope, and other aspects of project management.



- **Improve communication and collaboration:** Power BI dashboards and reports can be shared with team members and stakeholders to improve communication and collaboration on projects. This can help to ensure that everyone is on the same page and working towards the same goals.

The use of project management dashboards is becoming increasingly widespread in Denmark, as businesses look for ways to improve their efficiency and decision-making.

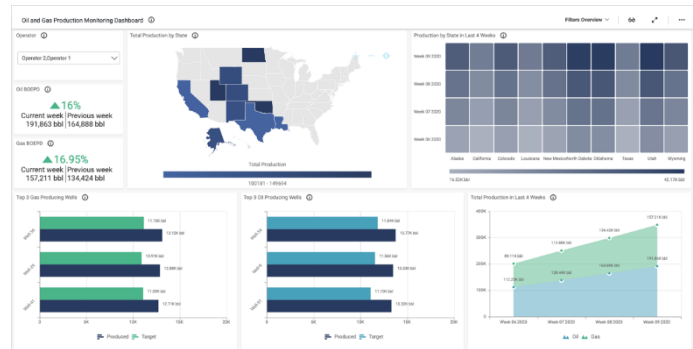
Here are some specific examples of how Power BI is being used in the oil and gas, petrochemical, railway, and power plant industries:

Oil and gas:

- **Production monitoring:** Power BI can be used to monitor real-time production data to identify any issues that could impact production. For example, Power BI can be used to monitor the flow of oil and gas through pipelines, the performance of drilling rigs, and the status of storage tanks.
- **Well performance analysis:** Power BI can be used to analyze well performance data to identify wells that are underperforming or at risk of failing. This information can be used to make decisions about maintenance and repair, and to optimize production.
- **Seismic data analysis:** Power BI can be used to analyze seismic data to identify potential oil and gas reserves. This information can be used to make decisions about exploration and drilling.

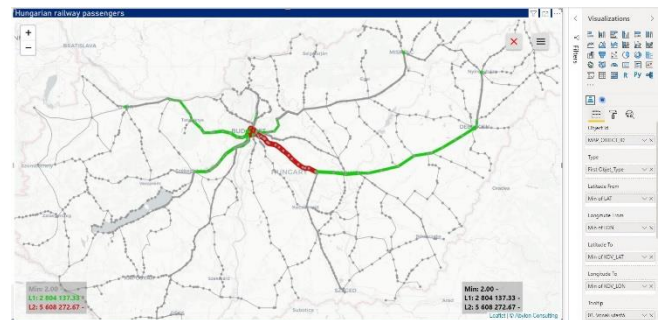
Petrochemical:

- **Process monitoring:** Power BI can be used to monitor real-time process data to identify any issues that could impact production quality or safety. For example, Power BI can be used to monitor the temperature, pressure, and flow of chemicals through manufacturing processes.
- **Inventory management:** Power BI can be used to track inventory levels and identify any potential shortages. This information can be used to make decisions about production and ordering.
- **Compliance reporting:** Power BI can be used to generate compliance reports for environmental and safety regulations.



Railway:

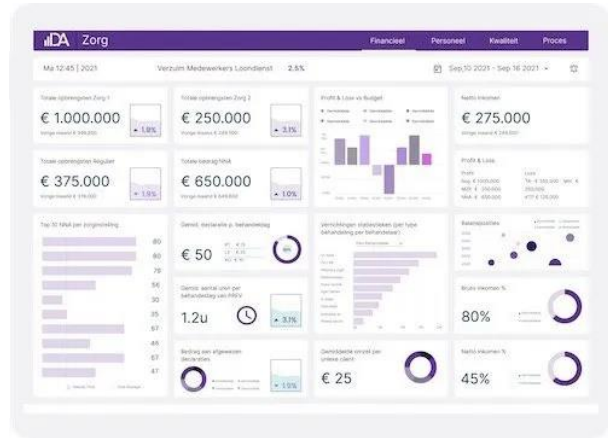
- **Asset tracking:** Power BI can be used to track the location and condition of railway assets such as locomotives, carriages, and tracks. This information can be used to make decisions about maintenance and repair, and to optimize operations.
- **On-time performance monitoring:** Power BI can be used to monitor the on-time performance of trains. This information can be used to identify areas for improvement and to make better decisions about scheduling.
- **Customer satisfaction analysis:** Power BI can be used to analyze customer satisfaction data to identify areas for improvement.



Power plant:

- **Equipment performance monitoring:** Power BI can be used to monitor the performance of power plant equipment such as generators, turbines, and transformers. This information can be used to identify any issues that could impact power generation or reliability.

- **Energy consumption analysis:** Power BI can be used to analyze energy consumption data to identify areas for improvement. This information can be used to make decisions about energy efficiency and cost savings.
- **Environmental impact monitoring:** Power BI can be used to monitor the environmental impact of power plants. This information can be used to comply with regulations and to reduce emissions.



Overall, Power BI is a powerful BI and data visualization tool that can be used in a variety of industries to improve efficiency, productivity, and decision-making.

4. What are the economic benefits of project management with Power BI?

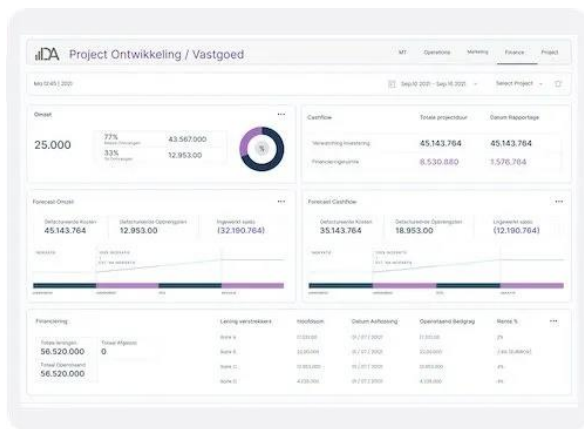
Power BI can provide a number of economic benefits for project management, including:

- **Increased productivity and efficiency:** Power BI can help project managers to be more productive and efficient by providing them with real-time insights into project progress, costs, and resources. This allows project managers to identify potential problems early on and make necessary adjustments.
- **Improved decision-making:** Power BI can help project managers to make better decisions by providing them with data-driven insights. This information can be used to make decisions about resource allocation, project scope, and other aspects of project management.
- **Reduced costs:** Power BI can help project managers to reduce costs by identifying and eliminating waste and inefficiencies. This can be done by tracking project progress and costs in real time and identifying areas where savings can be made.
- **Improved customer satisfaction:** Power BI can help project managers to improve customer satisfaction by delivering projects on time and on budget. This can be done by using Power BI to track project progress and identify potential problems early on.

Overall, Power BI can provide a number of economic benefits for project management. By **increasing productivity** and **efficiency**, **improving decision-making**, **reducing**

costs, and **improving customer satisfaction**, Power BI can help businesses to **save money** and improve their bottom line.

Here are some specific examples of how Power BI can be used to achieve these economic benefits:



- **Increased productivity and efficiency:** Power BI can be used to create custom dashboards and reports that provide project managers with real-time insights into project progress, costs, and resources. This information can be used to identify potential problems early on and make necessary adjustments. For example, a project manager can use Power BI to track the progress of tasks and milestones, identify tasks that are falling behind, and take corrective action.
- **Improved decision-making:** Power BI can be used to analyze project data and identify trends and patterns. This information can be used to make better decisions about resource allocation, project scope, and other aspects of project management. For example, a project manager can use Power BI to identify the most resource-intensive tasks and allocate resources more efficiently.
- **Reduced costs:** Power BI can be used to identify and eliminate waste and inefficiencies in projects. For example, a project manager can use Power BI to identify tasks that are taking longer than expected or tasks that are not adding value to the project.
- **Improved customer satisfaction:** Power BI can be used to track project progress and identify potential problems early on. This allows project managers to take corrective action and deliver projects on time and on budget. This can help to improve customer satisfaction.

Overall, Power BI is a powerful tool that can be used to improve project management in a variety of ways. By providing real-time insights, interactive visualizations, collaboration features, and affordability, Power BI can help businesses to save money and improve their bottom line.

5. How will the product be distributed?

There are a few ways to sell project management dashboards in Power BI in Denmark.

- Direct sales: We can sell Our dashboards directly to businesses in Denmark. This could involve cold calling, attending industry events, or networking with potential customers.
- Partnerships: We can partner with other businesses in Denmark to sell your dashboards. This could involve working with a consultancy firm, an IT company, or a software reseller.
- Online channels: We can sell Our dashboards through online channels such as your website, an online marketplace, or a SaaS platform.
- Freemium model: We can offer a freemium model, where users can access a basic version of your dashboards for free and pay for a premium version with additional features.
- Subscription model: We can offer a subscription model, where users pay a monthly or annual fee to access your dashboards.

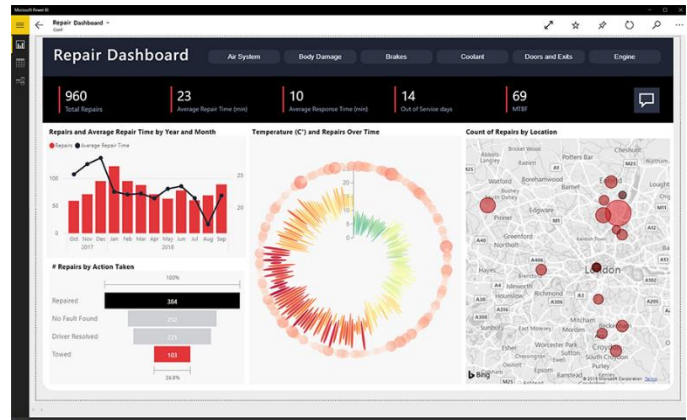


The best way to sell Our project management dashboards in Power BI in Denmark will depend on Our specific target audience and budget. If We are targeting a small number of businesses, direct sales may be the best option. If We are targeting a larger audience, partnerships or online channels may be a better option.

6. What should the product cost?

The price of building project management dashboards in Power BI software can vary depending on a number of factors, including:

- The complexity of the dashboard
- The amount of data that needs to be visualized
- The number of users who will be accessing the dashboard
- The level of customization required
- The experience and expertise of the person or team building the dashboard



In general, we can expect to pay anywhere from a few hundred dollars to several thousand dollars for a basic project management dashboard in Power BI. More complex dashboards with a lot of data and customization may cost even more.

Here are some additional factors to consider when pricing a project management dashboard in Power BI:

- The time it takes to build the dashboard
- The cost of the software licenses
- The cost of any third-party tools or services that are used
- The cost of training the users on how to use the dashboard

By considering all of these factors, we can get an accurate estimate of the cost of building a project management dashboard in Power BI.

7. How will they reach the target audience and create demand for their product? (Marketing and so on)



Here are some ways to find contacts to sell custom-made project management dashboards in Denmark and get them through marketing:

- **Online directories:** There are a number of online directories that list businesses in Denmark. We can search these directories by industry, location, and other criteria to find businesses that may be interested in your product.
- **Industry events:** Attending industry events is a great way to network with potential customers and partners. We can also use these events to promote your product and generate leads.
- **Social media:** Social media platforms such as LinkedIn and Twitter can be used to connect with potential customers and promote your product. We can also use social media to run advertising campaigns.
- **Direct mail:** Sending direct mail to businesses in Denmark is a good way to get your product in front of potential customers. Make sure to tailor your mailing to the specific industry or businesses you are targeting.
- **Cold calling:** Cold calling can be an effective way to reach potential customers, but it is important to be prepared and have a clear message.

PCEGmbH is a well-respected solution provider, consultant and system integrator of best-in-breed software for project intensive organizations across the globe with offices in Denmark and Iran. Our expertise lies in delivering PMO solutions by leveraging advanced technologies from Connecting Oracle Primavera and Power BI Construction and Engineering to help you constantly deliver projects with confidence while maintaining profitability.

SUPPORT

Please get in touch if you desire more information about our company or product or if you are experiencing any issues with our software.

+4593921697
CVR nr.: 40962131

- permanent@permanentingeniør.dk
- SGD.PBI@gmail.com

www.pcegmbh.com



www.permanentingeniør.dk



Shaahin Qajar has proven knowledge, expertise, and experience in utilizing Oracle Primavera P6, MS Project and Power BI.



He has provided project controls services to projects ranging from civil to industrial to high-rise construction, including Oil & Gas, Refinery, Petrochemical, and Power Plant, high-rise apartment buildings, and commercial projects, utilizing Primavera and MS Project CPM scheduling tools to create and maintain the CPM schedules for his clients.

From the planning and implementation of critical path method (CPM) scheduling to forensic schedule delay analysis and damage quantification, PCE GmbH Consulting's experts have the experience and knowledge to respond to clients' needs.